

FAROLAMP X



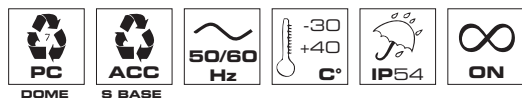
FAROLAMP X S

FAROLAMP X P

Cupole / Domes / Dômes



Base



FAROLAMP X

V ACDC	12 ÷ 24	-
V AC	-	240
mA	900 450	120

Codici / Codes

FAROLAMP X*

BASES	●	●	●	●	●
S	12/24V ACDC	84970	85044	85370	84968
	240V AC	84971	85271	85371	84992
P	12/24V ACDC	84978	85033	85049	85037
	240V AC	84979	84982	85160	84995

* Fornito con lampada / Supplied with bulb / Fourni avec ampoule

RICAMBI CUPOLE / SPARE DOMES / DOMES DE RECHANGE

●	●	●	●
71325	71328	71329	71293

Luce allo Xenon ad alte performance ottiche. Disponibile con due basi di fissaggio (standard S e a palo P).

Tensione operativa

12/24V ACDC e 240V AC +/-10% (fornito con lampada)

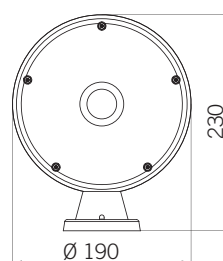
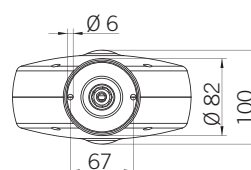
Caratteristiche meccaniche

Base in acciaio ad alta resistenza agli impatti e fissaggio tramite viteria standard non fornita (versione base S). Cupola in policarbonato autoestinguente.

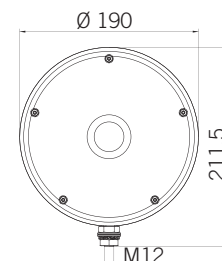
Caratteristiche luminose

La lampada a scarica di Xenon da 6J e la cupola appositamente studiata garantiscono un potente flash singolo (1F).

Certificazioni / Certifications



FAROLAMP X S



FAROLAMP X P



Xenon flashing beacon, delivering high optical performance. Two bases available (standard S and pole mount P).

Voltages

12/24V ACDC and 240V AC +/-10% (supplied with bulb)

Mechanical features

High impact resistance steel base. Screw mounting, screws not included (S base version). Self-extinguishing polycarbonate dome.

Optical features

6J Xenon discharge tube enhanced by the dome-shaped Fresnel lens provide a strong single flash (1F).



Feu au Xénon à haute performance optique. Disponible avec deux bases de fixation (standard S et hampe P).

Tension d'utilisation

12/24V ACDC ou 240V AC +/-10% (fourni avec ampoule)

Caractéristiques mécaniques

Base en acier à haute résistance aux chocs et fixation par vis standards non fournies (version base S). Dôme en polycarbonate autoextinguible.

Caractéristiques optiques

Tube à décharge au Xénon 6J et dôme spécialement conçu pour garantir un puissant flash simple éclat (1F).